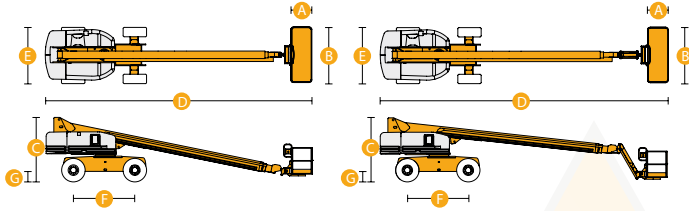


# the art of elevation!



## Self-Propelled Telescopic Booms S™-40 & S™-45

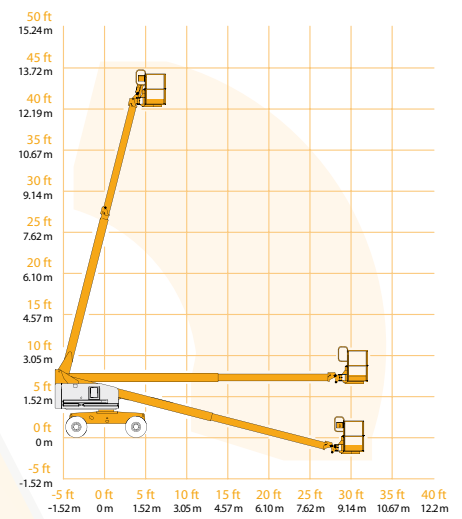
### Specifications



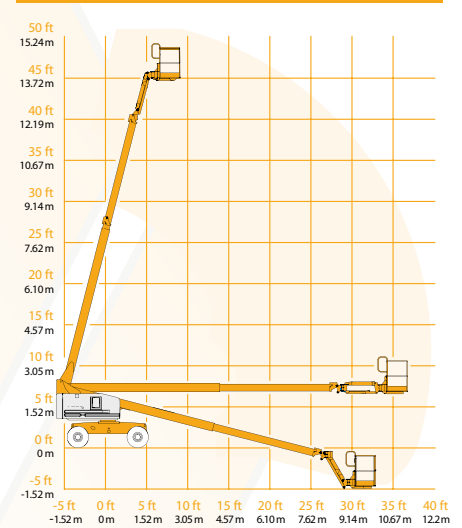
MODELS	S™-40		S™-45	
<b>MEASUREMENTS</b>	<b>US</b>	<b>Metric</b>	<b>US</b>	<b>Metric</b>
Working height maximum*	46 ft	14.20 m	51 ft	15.70 m
Platform height maximum	40 ft	12.20 m	45 ft	13.70 m
Horizontal reach maximum	31 ft 8 in	9.70 m	36 ft 8 in	11.20 m
Below ground reach	3 ft 2 in	.97 m	4 ft 11 in	1.5 m
<b>A)</b> Platform length - 6 ft model	2 ft 6 in	.76 m	2 ft 6 in	.76 m
Platform length - 8 ft model	3 ft	.91 m	3 ft	.91 m
<b>B)</b> Platform width - 6 ft model	6 ft	1.83 m	6 ft	1.83 m
Platform width - 8 ft model	8 ft	2.44 m	8 ft	2.44 m
<b>C)</b> Height - stowed	8 ft 2 in	2.49 m	8 ft 2 in	2.49 m
<b>D)</b> Length - stowed	24 ft 3 in	7.39 m	27 ft 10 in	8.48 m
- transport (jib tucked under)			22 ft 4 in	6.80 m
<b>E)</b> Width (with standard tires)	7 ft 6 in	2.30 m	7 ft 6 in	2.30 m
<b>F)</b> Wheelbase	7 ft 3 in	2.20 m	7 ft 3 in	2.20 m
<b>G)</b> Ground clearance - center	1 ft .5 in	.32 m	1 ft .5 in	.32 m
<b>PRODUCTIVITY</b>				
Lift capacity	500 lbs	227 kg	500 lbs	227 kg
Platform rotation	160°		160°	
Turntable rotation	360° continuous		360° continuous	
Turntable tailswing	2 ft 10 in	.86 m	2 ft 10 in	.86 m
Drive speed - stowed	4.8 mph	7.7 km/h	4.8 mph	7.7 km/h
Drive speed - raised or extended	0.68 mph	1.1 km/h	0.68 mph	1.1 km/h
Gradeability - 2WD - stowed**	30%		30%	
Gradeability - 4WD - stowed**	40%		40%	
Turning radius - inside	6 ft 8 in	2.0 m	6 ft 8 in	2.0 m
Turning radius - outside	15 ft 8 in	4.78 m	15 ft 8 in	4.78 m
Controls	12 V DC proportional		12 V DC proportional	
Tires - RT lug	12-16.5 NHS		12-16.5 NHS	
Tires - ribbed (2WD front)	12.5 L - 16 L		12.5 L - 16 L	
<b>POWER</b>				
Power source	Ford LRG 425 EFI 4 cylinder gas/LPG 82 hp (61.1 kW) Deutz F3L-2011 3 cylinder diesel 48 hp (35.8 kW) Perkins 404C-22 4 cylinder diesel 51 hp (38 kW)			
Auxiliary power unit	12 V DC		12 V DC	
Hydraulic tank capacity	45 gal	170 L	45 gal	170 L
Fuel tank capacity	20 gal	76 L	20 gal	76 L
<b>WEIGHT***</b>				
	11,650 lbs	5,284 kg	14,790 lbs	6,709 kg

**STANDARDS COMPLIANCE** ANSI A92.5, CSA B354.4, CE Compliance, AS 1418.10, PB-10-611-03

### RANGE OF MOTION S™-40



### RANGE OF MOTION S™-45



\* The metric equivalent of working height adds 2 m to platform height. U.S. adds 6 ft to platform height.  
 \*\* Gradeability applies to driving on slopes. See operator's manual for details regarding slope ratings.  
 \*\*\* Weight will vary depending on options and/or country standards.

# the art of elevation!



## Self-Propelled Telescopic Booms S™-40 & S™-45

### Features



**EASILY CONFIGURED TO  
MEET YOUR NEEDS**

#### PLATFORM OPTIONS

- Steel 6 ft (1.83 m) (standard)
- Steel 8 ft (2.44 m)
- Steel 6 or 8 ft (1.83 or 2.44 m) tri-entry

#### JIB OPTIONS

- Non-jib
- 5 ft (1.52 m) jib boom

#### POWER OPTIONS

- Ford gas/LPG 82 hp (61.1 kW)
- Deutz diesel 48 hp (35.8 kW)
- Perkins diesel 51 hp (38 kW)

#### DRIVE OPTIONS

- 2WD
- 4WD

#### AXLE OPTIONS

- Oscillating
- Non-oscillating

#### TIRE OPTIONS

- Rough terrain air-filled (standard)
- Rough terrain foam-filled
- Rough terrain non-marking air or foam-filled
- High flotation turf air-filled

### STANDARD FEATURES

#### MEASUREMENTS

##### S™-40

- 46 ft (14.20 m) working height
- 31 ft 8 in (9.70 m) horizontal reach
- Up to 500 lb (227 kg) lift capacity

##### S™-45

- 51 ft (15.70 m) working height
- 36 ft 8 in (11.20 m) horizontal reach
- Up to 500 lb (227 kg) lift capacity

#### PRODUCTIVITY

- Self-leveling platform
- Hydraulic platform rotation
- Fully proportional Hall effect joystick controls
- Fuel select switch on platform and ground control panels (Gas/LPG models)
- Drive enable
- AC power to platform
- Tilt alarm
- Horn
- Hour meter
- 360° continuous turntable rotation
- Locking, low profile turntable covers
- Positive traction drive
- Two speed wheel motors

#### POWER

- All engines are emissions compliant
- 12 V DC auxiliary power
- Anti-restart engine protection
- Auto engine fault shutdown
- Deutz intake air heater
- Swing out engine tray

### OPTIONS & ACCESSORIES

#### PRODUCTIVITY

- Platform swing gate
- Half mesh platform inserts with swing gate
- Platform top auxiliary rail
- Arc Pro 275™ Heavy-Duty Welder package
- Weld leads to platform
- Air line to platform
- Hydraulic oil cooler
- Arctic hydraulic oil
- Arctic hoses (boom hoses only)
- Basic hostile environment kit
- Deluxe hostile environment kit
- Deluxe aircraft protection package
- Thumb rocker steer
- Tool tray
- Fluorescent tube caddy
- Pipe cradle (pair)
- Alarm package
- Panel cradle package
- Platform work lights
- Front driving lights
- Lockable platform control box covers
- Tow package
- Loegering steel track, factory installed
- Loegering soft track, factory installed

#### POWER

- Engine gauge package
- AC Generator Packages (2500 or 3000 watts)
- Cold Start Packages
- GS/LPS and DS UL588 fire protection rating
- Diesel scrubber/spark arrestor
- Diesel spark arrestor muffler
- LPG tank 33.5 lb (15.19 kg) capacity
- Additional LPG tank with carrier

#### Genie United States

18340 NE 76th Street  
P.O. Box 97030  
Redmond, Washington 98073-9730  
Telephone (425) 881-1800  
Toll Free in USA/Canada 800-536-1800  
Fax (425) 883-3475

#### Genie Europe

The Maltings  
Wharf Road  
Grantham U.K.  
NG31 6BH  
Telephone +44 (0)1476 584333  
Fax +44 (0)1476 584334  
Email: infoeurope@genieind.com

#### Distributed By:

For further information, please contact your local distributor or the Genie Industries sales office listed. Product specifications are subject to change without notice or obligation. The photographs and drawings in this brochure are for illustrative purposes only. Refer to the appropriate Operator's Manual for instructions on the proper use of this equipment. Failure to follow the appropriate Operator's Manual when using our equipment or to otherwise act irresponsibly may result in serious injury or death. Prices and specifications subject to change without notice. The only warranty applicable is the standard written warranty applicable to the particular product and sale. Genie makes no other warranty, expressed or implied. Products and services listed may be trademarks, service marks or trade-names of TEREX Corporation and/or its subsidiaries in the USA and other countries and all rights are reserved. Copyright © 2006 Genie Industries, Inc. "Genie" is a Registered Trademark of Genie Industries, Inc. in the USA and many other countries. Genie is a TEREX Company.